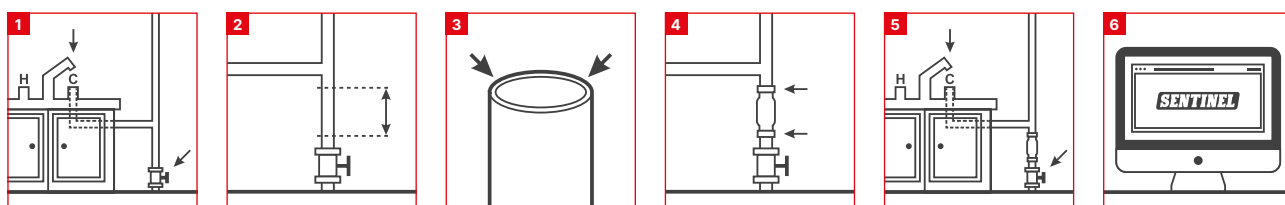


# SIX STEPS TO INSTALLING A SESI



SESI is an electrolytic inhibitor that helps to combat the issue of limescale build up in homes and commercial properties

**A fit-and-forget device, SESI comes with a 5 year guarantee and a life expectancy of approximately 10 years. All SESI models come complete with robust compression fittings for easy connection. Simply follow these six straightforward installation steps:**



- 1** Close the stopcock to the incoming cold water mains supply. Check that the water is turned off by opening the nearest cold water tap.
- 2** Position your SESI in a straight section of the pipe, after the stopcock and before the system branches. The SESI must be fitted at least 3m of pipe length away from any appliance it is protecting. Measure the correct length of the model being fitted and mark the pipe. Remove this section taking care that the ends of the pipe are square.
- 3** Ensure the ends of the pipe are clean and smooth.
- 4** Place your SESI into the gap and connect to the pipe ends using the compression fitting provided. It does not matter which way round the unit is fitted, but ensure the joints are firm.  
  
The compression fittings should be tightened using two spanners, one to tighten the nut and the other to prevent the fitting from rotating whilst the nut is being tightened. For normal joint making the nut should be tightened by hand to the following torque settings and then the extra applicable number of turns applied until the joint is leak free: SESI 15 mm = 1 Nm / ¼ turn. SESI 22 mm = 2.5 Nm / ¼ turn.
- 5** Open the stopcock and run the cold tap before checking for any leaks.
- 6** Register online to activate your guarantee at [www.sentinelprotects.com/uk/guarantee-registration](http://www.sentinelprotects.com/uk/guarantee-registration)

WRAS approved, the unit must be installed in accordance with WRAS installation requirements IRN R120 and IRN R150, and further information on these is available from [www.wras.co.uk](http://www.wras.co.uk). If the pipe in your systems is of a different diameter or non standard material, consult a plumber before attempting to fit.

[www.sentinelprotects.com/SESI](http://www.sentinelprotects.com/SESI)

#### Sentinel Performance Solutions Ltd

7650 Daresbury Park, Warrington, Cheshire, WA4 4BS, UK

Tel: +44 (0) 1928 704 330

[www.sentinelprotects.com](http://www.sentinelprotects.com)

[customer.services@sentinelprotects.com](mailto:customer.services@sentinelprotects.com)



@SentinelHQ



SentinelCPM



sentinel\_uk\_insta

Sentinel® and SESI® are trademarks owned by Sentinel Performance Solutions Limited

**SENTINEL®**